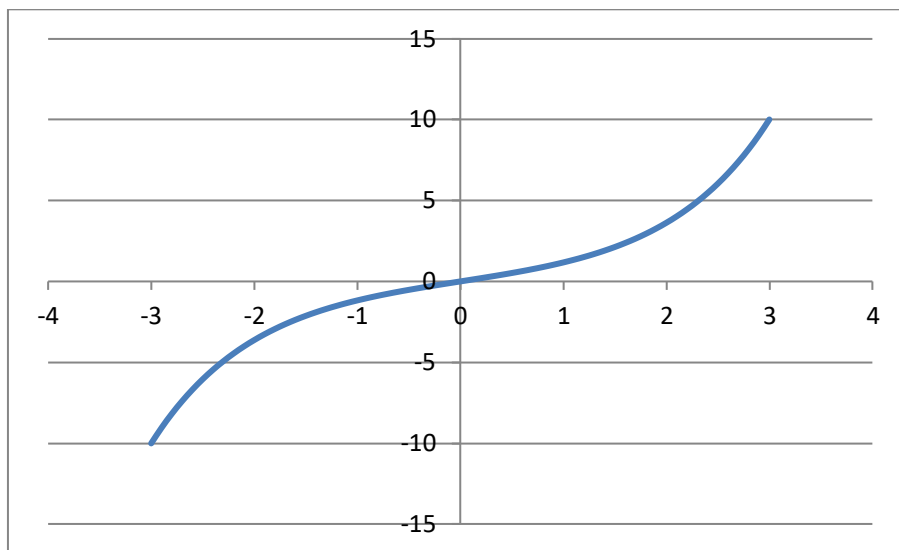


Hyperbolic Functions

The hyperbolic functions¹ are standard functions that can be found on most scientific calculators and spreadsheets. They are also available in some programming languages. They are defined in terms of the exponential functions² as follows and their graphs are also illustrated.

sinh(x)

$$\sinh(x) = \frac{1}{2}(e^x - e^{-x})$$

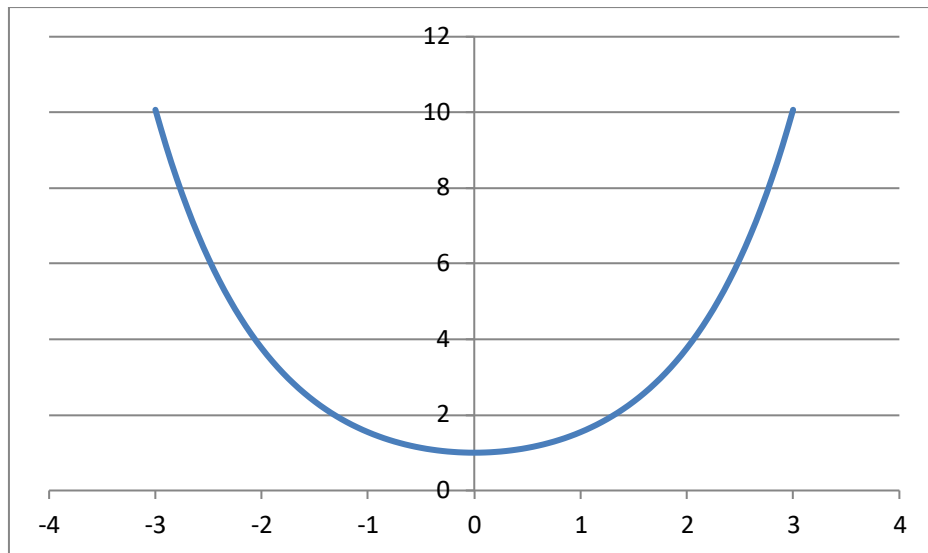


cosh(x)

$$\cosh(x) = \frac{1}{2}(e^x + e^{-x})$$

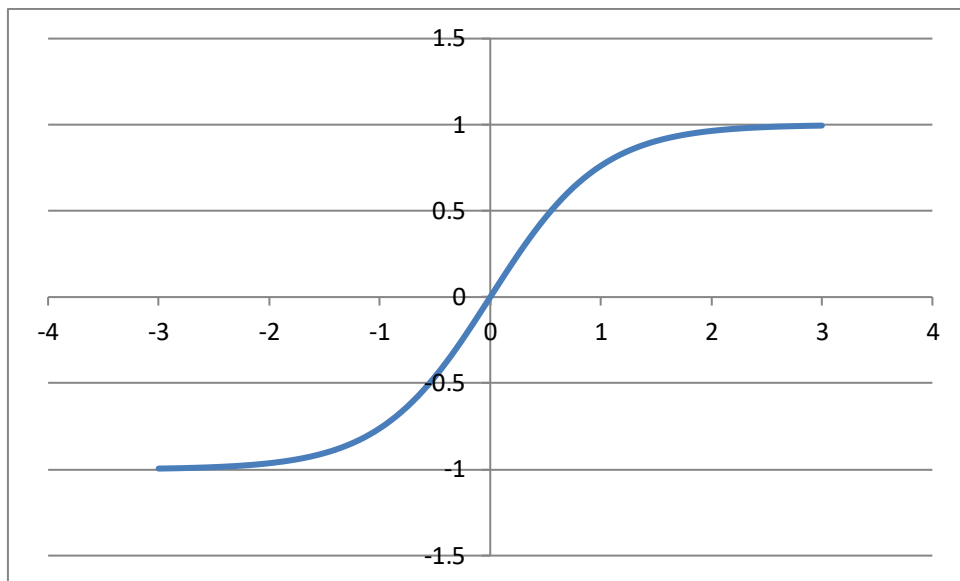
¹ [Functions](#)

² [Logarithmic and Exponential Functions](#)



$\tanh(x)$

$$\tanh(x) = \frac{\sinh(x)}{\cosh(x)} = \frac{e^x - e^{-x}}{e^x + e^{-x}}$$



A worksheet on Hyperbolic Functions is provided by Mathcentre³.

³ [Hyperbolic Functions \(Mathcentre\)](#)